

Materials Center Leoben Forschung GmbH (MCL) is an internationally active research institution specializing in materials research. The field of activity of MCL includes on the one hand the implementation of research and development projects along the whole product value chain (materials design, materials processing and materials use in innovative products) and on the other hand materialbased services (laboratory, computational and advisory services).

To strengthen our team, we are looking for someone with the following area of responsibility or requirement profile:

Post-Doc in CFD-simulation

With focus on multi-physical model development

Reference-nº: MCL_128

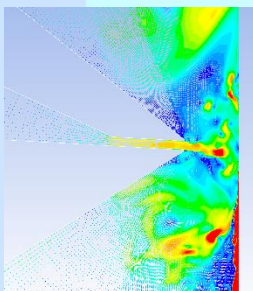
CFD – Multiphysics - Modelling

These topics inspire you or you are already familiar with them? Then you are right the person we are looking for!

What do we need?

- PhD with focus on model development in the field of CFD
- Expertise in CFD-simulation (Fluent, OpenFOAM) mandatory
- Experience with application for funded research projects
- Object-oriented programming skills required
- Competence in multi-physics model development preferred
- Good oral and written communication skills in English
- Scientific curiosity, team and communication skills, self-initiative

We are working worldwide in strong cooperation with well-known scientific- and company partners!



Your tasks?

- Simulation of CFD-based topics: problem identification, model formulation, model reduction, efficient meshing, visual post-processing and interpretation of results
- Multi-physics model development in Fluent and OpenFOAM
- Application for and project management of research and engineering projects

Our offer:

A permanent employment, with an immediate start and a gross monthly salary of € 3.400,00. Overpayment depending on your qualifications possible. Place of employment: Leoben.

Please send your complete application documents by post or email. We would be pleased to get to know you!

Materials Center Leoben Forschung GmbH
c/o Dr. Werner Ecker
+43 3842 45922 0
Roseggerstraße 12, A-8700 Leoben
Email: bewerbung@mcl.at; www.mcl.at

