

Materials Center Leoben Forschung GmbH (MCL) is an internationally active research institution specializing in materials research. The field of activity of MCL includes on the one hand the implementation of research and development projects along the whole product value chain (materials design, materials processing and materials use in innovative products) and on the other hand materialbased services (laboratory, computational and advisory services).

To strengthen our team, we are looking for someone with the following area of responsibility or requirement profile:

## **Researcher Embedded Inference**

*Reference-n°.: MCL\_138*

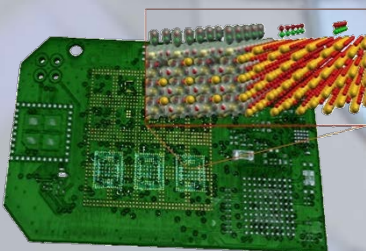
### Machine Learning – Embedded Systems – Tensor Flow

*These topics inspire you or you are already familiar with them? Then you are the right person we are looking for!*

#### What do we need?

- *Academic degree (master equivalent) preferably computer science or mathematics*
- *Knowledge in machine learning*
- *Knowledge in programming embedded systems*
- *Working knowledge of programming in Python*
- *Experience with TensorFlow*
- *Scientific curiosity, team skills, self-initiative*
- *Good oral and written communication skills in German and English*

We are working worldwide in strong cooperation with well-known scientific- and company partners!



#### Your tasks?

- *Help executing ML workloads on constrained systems*
- *Profile execution of TensorFlow models on different platforms*
- *Explore TensorFlow/XLA*
- *Investigate low-precision ML models*
- *Presentation of results at international conferences*
- *Writing of scientific articles for peer reviewed journals*

#### Our offer:

A permanent employment, with an immediate start and a (min.) gross monthly salary of € 2,900.00. Overpayment dependent on your professional qualification and experience possible.

Please send your complete application documents by post or email. We would be pleased to get to know you!

**Materials Center Leoben Forschung GmbH**  
z.H.: Manfred Mücke  
Roseggerstraße 12, A-8700 Leoben  
Email: [bewerbung@mcl.at](mailto:bewerbung@mcl.at); [www.mcl.at](http://www.mcl.at)

