

Materials Center Leoben Forschung GmbH (MCL) is an internationally active research institution specializing in materials research. The field of activity of MCL includes on the one hand the implementation of research and development projects along the whole product value chain (materials design, materials processing and materials use in innovative products) and on the other hand materialbased services (laboratory, computational and advisory services).

To strengthen our team, we are looking for someone with the following area of responsibility or requirement profile:

Researcher

Sensor Data Analytics

Reference-n°.: MCL_139

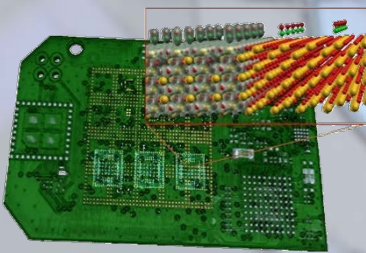
MO_x Sensors - Sensor Arrays – Machine Learning

These topics inspire you or you are already familiar with them? Then you are the right person we are looking for!

What do we need?

- *Academic degree (master equivalent) preferably chemistry, physics or mathematics*
- *Experience with sensor data processing*
- *Working knowledge of programming in Python*
- *Knowledge in machine learning*
- *Scientific curiosity, team skills, self-initiative*
- *Good oral and written communication skills in English and German*

We are working worldwide in strong cooperation with well-known scientific- and company partners!



Your tasks?

- *Contribute to latest sensor array prototypes*
- *Extend existing signal processing tool chain*
- *Feature engineering at the interface of chemistry and machine learning*
- *Classifier design and validation*
- *Design of experiment*
- *Presentation of results at international conferences*
- *Writing of scientific articles for peer reviewed journals*

Our offer:

A permanent employment, with an immediate start and a (min.) gross monthly salary of € 2,900.00. Overpayment depending on your professional qualification and experience possible.

Please send your complete application documents by post or email. We would be pleased to get to know you!



Materials Center Leoben Forschung GmbH
z.H.: Manfred Mücke
Roseggerstraße 12, A-8700 Leoben
Email: bewerbung@mcl.at; www.mcl.at