

Materials Center Leoben (MCL) - with a staff of 170 highly specialized employees - supports numerous companies in the production sector developing high-performance materials, manufacturing processes and products. MCL designs specific computer-aided technologies in order to accelerate innovation processes in manufacturing companies as well as to support the digitalization of the value chain and products. MCL's portfolio includes cooperative research and development projects with international and national partners from the production and research sectors as well as several consulting, laboratory and simulation services in materials science.

To strengthen our team, we are looking for someone with the following area of responsibility or requirement profile:

Research Assistant

3D Imaging of Advanced Li-Ion Batteries

Reference-n°.: MCL_163

Tomography, Li-Ion Batteries, Image Analysis

These topics inspire you or you are already familiar with them? Then you are right the person we are looking for!

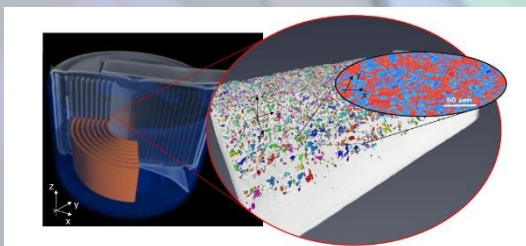
What do we need?

- Academic degree (master or PhD equivalent) preferably computer science, mathematics, physics
- Knowledge in image analysis, machine learning etc.
- Interest in experimental techniques and material science related questions
- Scientific curiosity, team skills, self-initiative
- Good oral and written communication skills in English

You will work in strong cooperation with well-known company partners to bridge the gap between research and industrial exploitation!

Your tasks?

- Develop an advanced image analysis toolbox based on machine learning algorithm.
- Apply the developed toolbox to gain enhanced morphological or structural 3D information of highly advanced cell components.
- Take part at tomography imaging experiments, e.g. synchrotron beamline and lab based ones.
- Publish in high ranked international journals.
- Participate at international conferences.



Our offer:

An indefinite working employment, with an immediate start and a (min.) gross monthly salary of € 2.800,00. Overpayment dependent on your professional qualification and experience possible.

Please send your complete application documents by post or email. We would be pleased to get to know you!

Materials Center Leoben Forschung GmbH
z.H.: DI Dr. priv. Doz. Roland Brunner
Roseggerstraße 12, A-8700 Leoben
Email: bewerbung@mcl.at; www.mcl.at

