

Materials Center Leoben Forschung GmbH (MCL) is an internationally active research institution specializing in materials research. The field of activity of MCL includes on the one hand the implementation of research and development projects along the whole product value chain (materials design, materials processing and materials use in innovative products) and on the other hand materialbased services (laboratory, computational and advisory services).

To strengthen our team, we are looking for someone with the following area of responsibility or requirement profile:

## PhD position

### FE-Modelling and Experimental Investigation of a Worldwide Rail

#### Defect Problem

Reference-n°.: MCL\_172

#### FE-Modelling

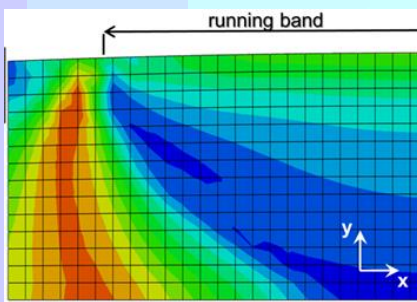
#### Wheel/rail contact – Fracture mechanics – Experiments

*These topics inspire you or you are already familiar with them? Then you are right the person we are looking for!*

##### What do we need?

- Academic degree (master equivalent) preferably physics, materials science or mathematics
- Knowledge in programming languages and interest and experience in finite-element-methods
- Scientific curiosity, team skills, self-initiative, organizational skills
- Good oral and written communication skills in English

**We are working worldwide in strong cooperation with well-known scientific- and company partners**



##### Your tasks?

- Organization of experiments
- Finite-element-simulations of crack initiation and growth due to operational railway loads
- Automatization of models by programming
- Presentation of results at international conferences
- Writing of scientific articles for peer reviewed journals

##### Our offer:

A permanent employment, with a start from October 1<sup>st</sup> and a gross monthly salary of € 2.864,47.

Please send your complete application documents by post or email. We would be pleased to get to know you!

Materials Center Leoben Forschung GmbH  
c/o: Dr. Werner Ecker  
Roseggerstraße 12, A-8700 Leoben  
Email: [bewerbung@mcl.at](mailto:bewerbung@mcl.at); [www.mcl.at](http://www.mcl.at)

