

Materials Center Leoben (MCL) - with a staff of 180 highly specialized employees - supports numerous companies in the production sector developing high-performance materials, manufacturing processes and products. MCL designs specific computer-aided technologies in order to accelerate innovation processes in manufacturing companies as well as to support the digitalization of the value chain and products. MCL's portfolio includes cooperative research and development projects with international and national partners from the production and research sectors as well as several consulting, laboratory and simulation services in materials science.

To strengthen our team, we are looking for someone with the following area of responsibility or requirement profile:

PhD position

FE-Modelling and Experimental Investigation of a Worldwide Rail

Defect Problem

Reference-n°.: MCL_175

FE-Modelling

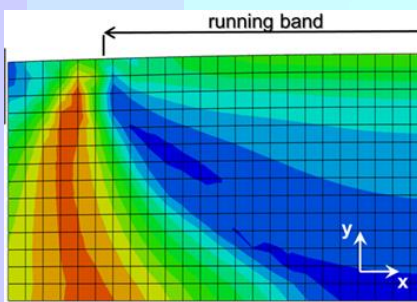
Wheel/rail contact – Fracture mechanics – Experiments

These topics inspire you or you are already familiar with them? Then you are right the person we are looking for!

What do we need?

- Academic degree (master equivalent) preferably physics, materials science or mathematics
- Knowledge in programming languages and interest and experience in finite-element-methods
- Scientific curiosity, team skills, self-initiative, organizational skills
- Good oral and written communication skills in English

We are working worldwide in strong cooperation with well-known scientific- and company partners



Your tasks?

- Organization of experiments
- Finite-element-simulations of crack initiation and growth due to operational railway loads
- Automatization of models by programming
- Presentation of results at international conferences
- Writing of scientific articles for peer reviewed journals

Our offer:

A permanent employment, with a start from February 1st and a gross monthly salary of € 2.864,47.

Please send your complete application documents by post or email. We would be pleased to get to know you!

Materials Center Leoben Forschung GmbH
c/o: Dr. Werner Ecker
Roseggerstraße 12, A-8700 Leoben
Email: bewerbung@mcl.at; www.mcl.at

