

Materials Center Leoben (MCL) - with a staff of 180 highly specialized employees - supports numerous companies in the production sector developing high-performance materials, manufacturing processes and products. MCL designs specific computer-aided technologies in order to accelerate innovation processes in manufacturing companies as well as to support the digitalization of the value chain and products. MCL's portfolio includes cooperative research and development projects with international and national partners from the production and research sectors as well as several consulting, laboratory and simulation services in materials science.

To strengthen our team, we are looking for someone with the following area of responsibility or requirement profile:

Master-Thesis

Thermal evaluation of electronic packages

for root-cause analysis

Reference-n°.: MCL_178

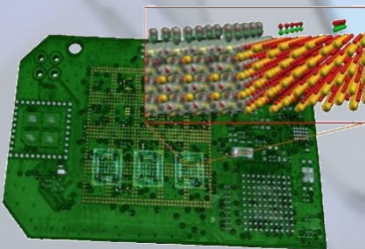
Thermal management – Validation process – Design for Reliability

These topics inspire you or you are already familiar with them? Then you are right the person we are looking for!

What do we need?

- *Education in one of the following fields: physics, materials science or mathematics*
- *Interest in experimental and coding techniques*
- *Interests in microelectronics*
- *Scientific curiosity, team skills, self-initiative, communications skills*
- *Knowledge / language skills: German / English*

We are working worldwide in strong cooperation with well-known scientific- and company partners!



Your tasks?

- *Thermal measurements of LED packages*
- *Statistical evaluation of influences caused by the set-up*
- *Build-up of thermal validated model for root cause analysis*
- *Presentation of results at project meetings*

Our offer:

An employment, with an immediate start and an expense allowance of €3000.00 net for 6 months.

Please send your complete application documents by post or email. We would be pleased to get to know you!



Materials Center Leoben Forschung GmbH
z.H.: Dr. Elke Kraker
Roseggerstraße 12, A-8700 Leoben
Email: bewerbung@mcl.at; www.mcl.at